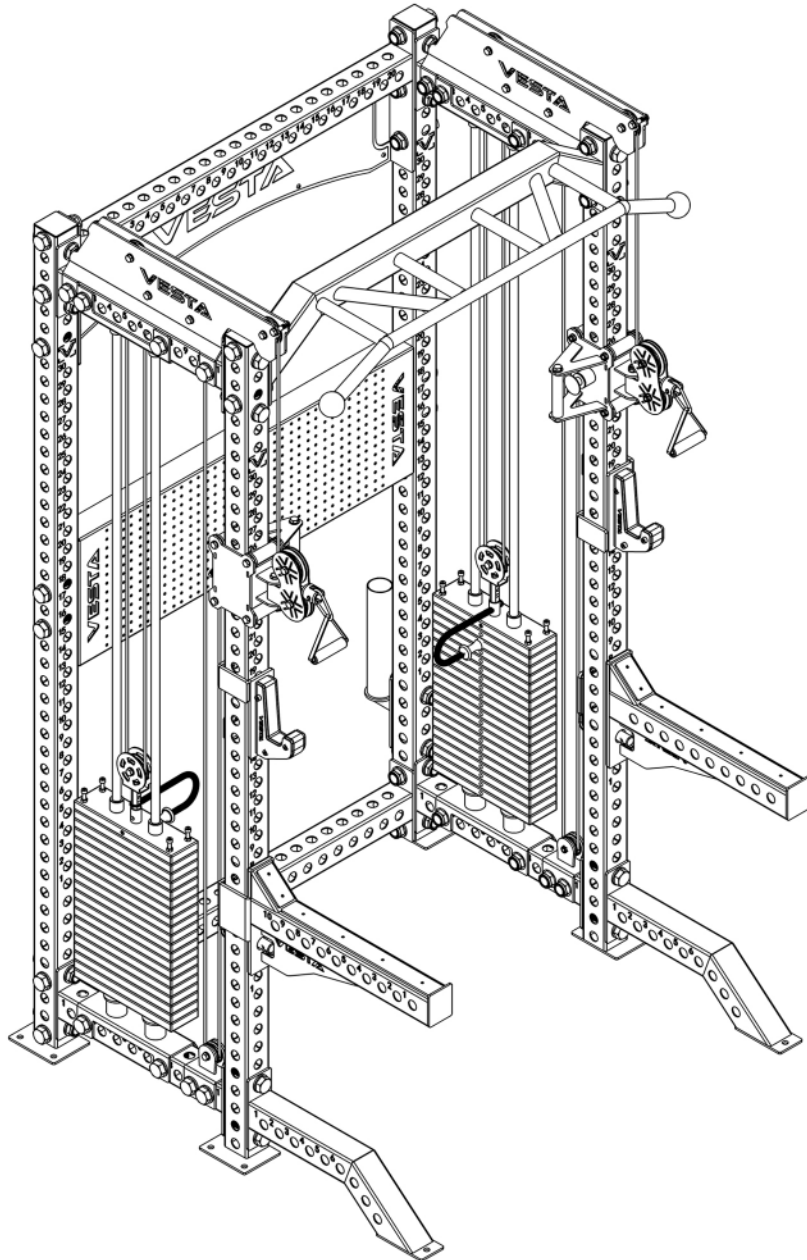


# VESTA

[www.vestafitness.com](http://www.vestafitness.com)



**VESTA PRO SERIES POWER RACK 2IN1**

## **OWNER'S MANUAL**

Connect with us on Instagram @Vesta.Fitness



**IMPORTANT– Please read fully manual before assembly or using**

## **BEFORE YOU START**

Please take sufficient time to read the installation instructions before assembling.

Remove all parts from the packaging, separate and count each various components to ensure everything has been correctly provided.

The innovative Modular Design and Preassembly that ensure the installation of this machine to be Quick and Easy.

It is the owner's responsibility to ensure that all users of this unit have read the owner's manual and are familiar with the safety precautions.

## **SAFETY PRECAUTIONS**

- Highly recommended for two or more people to assemble the equipment to avoid injury.
- Assemble the equipment on a flat level surface.
- Consider placing a mat under the equipment to protect your floor.
- Wear safety footwear and clothing during assembly and use.
- Only tighten nuts and bolts by hand until the whole equipment is assembled.
- Ensure you correctly orientate each piece before attaching.
- Do not allow children and pets to be unsupervised around the assembly or usage of this equipment
- Ensure all parts are in full working order before use.
- Only one person should use the machine at any one time.
- Keep hair, fingers or clothing away from moving parts.
- Only use attachments recommended by the manufacturer.
- Never operate if any parts are not functioning correctly.
- Always correctly stretch and warm up before using the equipment.

**Stop immediately** if you experience any pain, dizziness or nausea. See a doctor at once.

**VESTA FITNESS ASSUMES NO RESPONSIBILITY FOR PERSONAL INJURY OR PROPERTY DAMAGE SUSTAINED BY OR THROUGH THE USE OF THIS PRODUCT.**

# TABLE OF CONTENTS

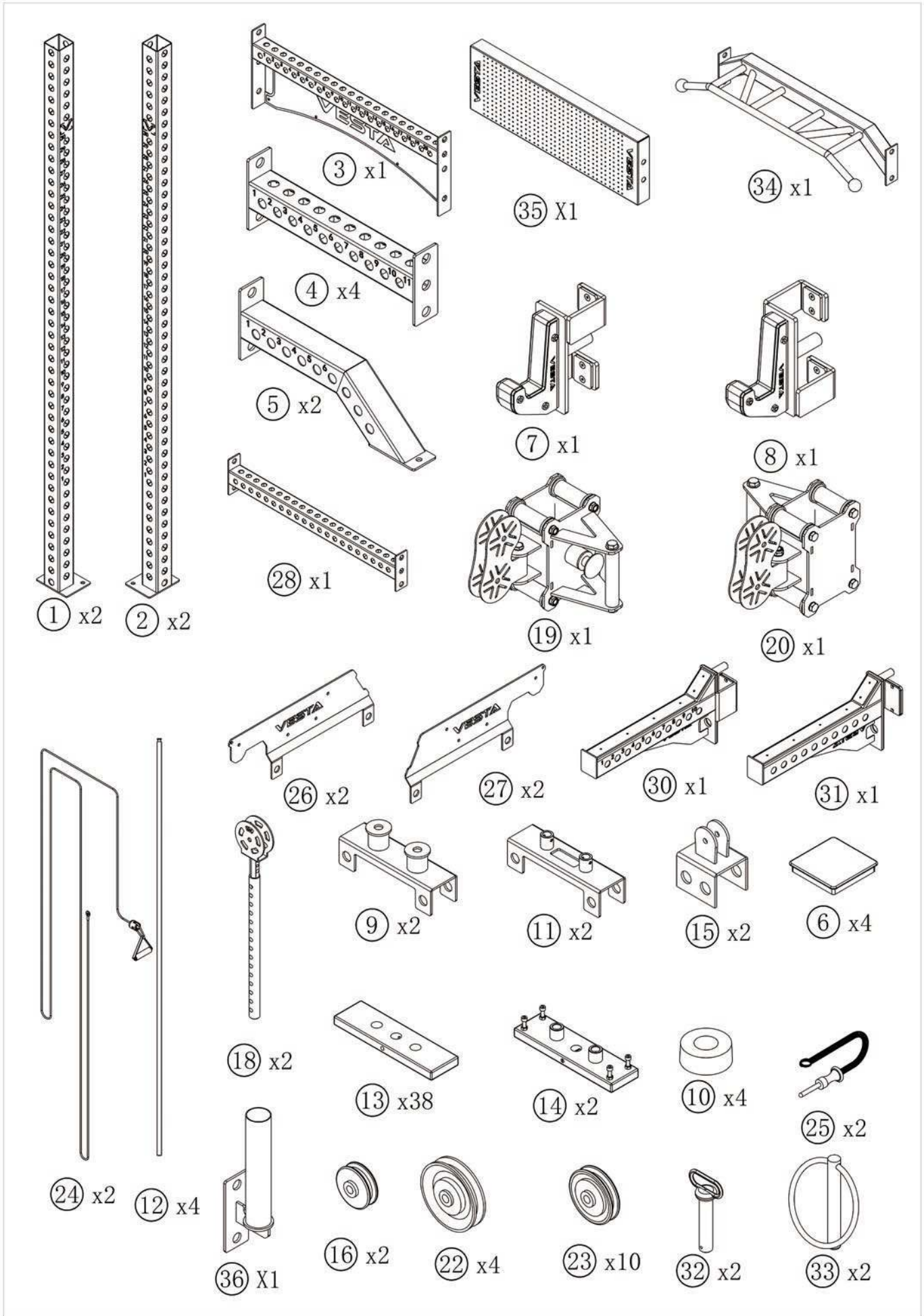
<b>Parts list</b> .....	2-3
<b>Part identification</b> .....	4-5
<b>Assembly step 1</b> .....	6
<b>Assembly step 2</b> .....	7
<b>Assembly step 3</b> .....	8
<b>Exploded Diagram</b> .....	9
<b>Assembly Diagram</b> .....	10
<b>Warranty</b> .....	11

## PARTS/HARDWARE LIST

ITEM NO.	PARTS	SPECIFICATION	UNIT	QTY	MARKS
1	RIGHT UPRIGHT	75×75×2300mm	PCS	2	
2	LEFT UPRIGHT	75×75×2300mm	PCS	2	
3	CROSSMEMBER WITH LOGO BRANDING	75×75×1100mm	PCS	1	
4	CROSSMEMBER	75×75×550mm	PCS	1	
5	FRONT EXTENSION LEG	75×75×570mm	PCS	2	
6	END CAP		PCS	4	
7	LEFT J CUP		PCS	1	
8	LEFT J CUP		PCS	1	
9	WEIGHT STACK GUIDE ROD BOTTOM BRACKET		PCS	4	
10	RUBBER ABSORBER	φ 25mm	PCS	4	
11	WEIGHT STACK GUIDE ROD UPPER BRACKET		PCS	4	
12	WEIGHT STACK GUIDE ROD		PCS	4	
13	WEIGHT STACKS	10LBS	PCS	38	
14	FIRST WEIGHT STACK		PCS	2	
15	PULLEY RETAINING BRACKET		PCS	2	
16	ALUMINUM PULLEY	φ 54mm	PCS	2	
17	HEX NUTS&BOLTS	M24X110MM	PCS	56	
18	WEIGHT STACK GUIDE ROD		PCS	2	
19	RIGHT FUNCTIONAL TRAINER PULLEY BOX		PCS	1	
20	LEFT FUNCTIONAL TRAINER PULLEY BOX		PCS	1	
21	HEX NUTS&BOLTS	M10X45MM	PCS	18	
22	ALUMINUM PULLEY	φ 90mm	PCS	4	
23	ALUMINUM PULLEY	φ 70mm	PCS	10	
24	CABLE	φ 4. 8mm	PCS	2	
25	MAGNETIC WEIGHT STACK SELECTED PIN		PCS	2	
26	RIGHT STRINGER		PCS	2	
27	LEFT STRINGER		PCS	2	
28	REAR CROSSMEMBER	75×75×1100mm	PCS	1	
29	HEX NUTS&BOLTS	M10X30MM	PCS	12	
30	RIGHT SAFETY SPOTTER		PCS	1	
31	LEFT SAFETY SPOTTER		PCS	1	
32	RED PIN		PCS	2	
33	RED PIN RING		PCS	2	
34	MULTI PULL UP BAR		PCS	1	
35	STORAGE PEG		PCS	1	
36	BABRBELL HOLDER		PCS	1	

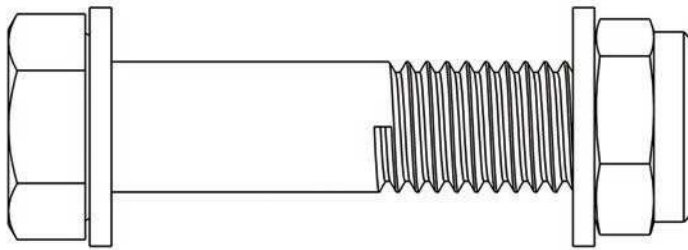
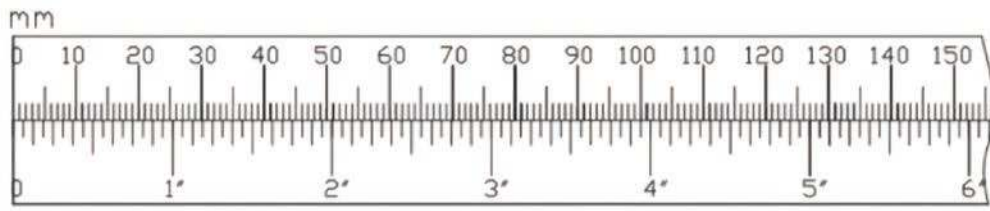
# PART IDENTIFICATION

IMPORTANT: if you cannot find a part in the hardware kit, check to see if it has been preassembled.

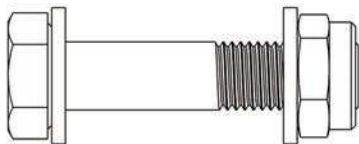


# PART IDENTIFICATION

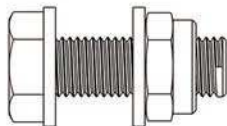
IMPORTANT: if you cannot find a part in the hardware kit, check to see if it has been preassembled.



①7 x56



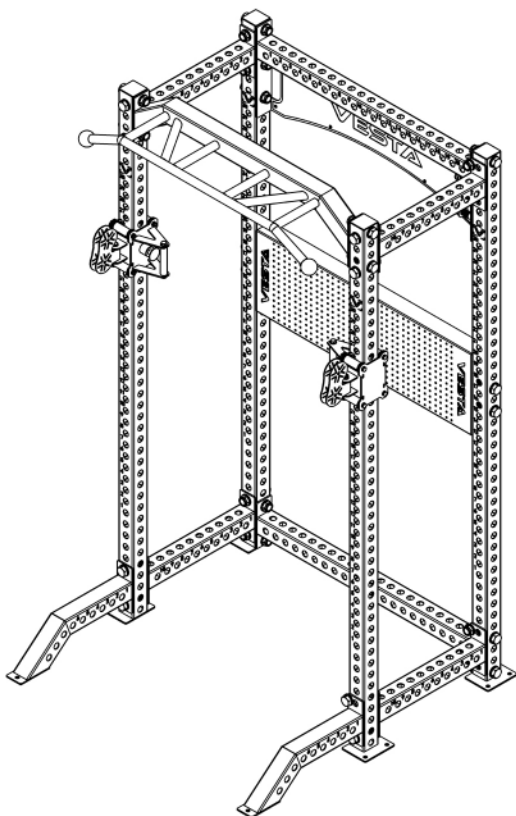
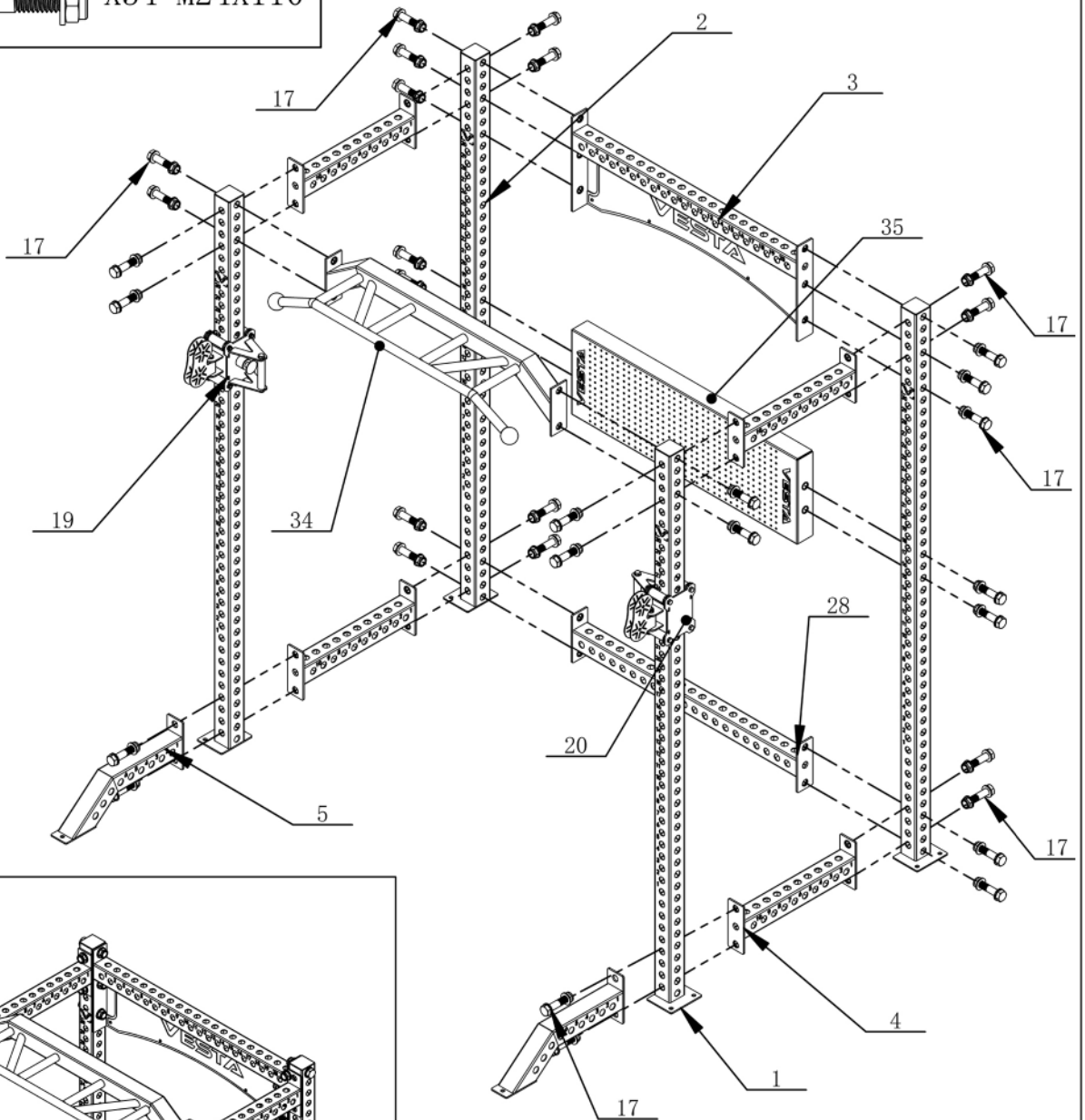
②1 x18



②9 x2

# ASSEMBLY STEP 1

①7 X34 M24X110

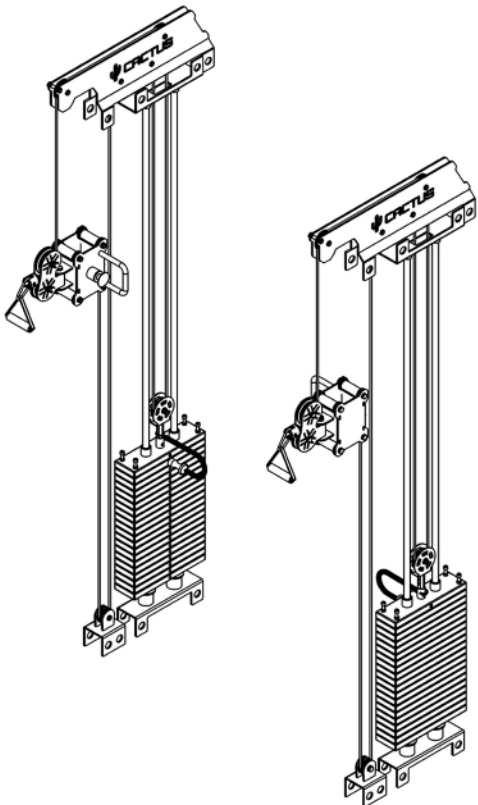
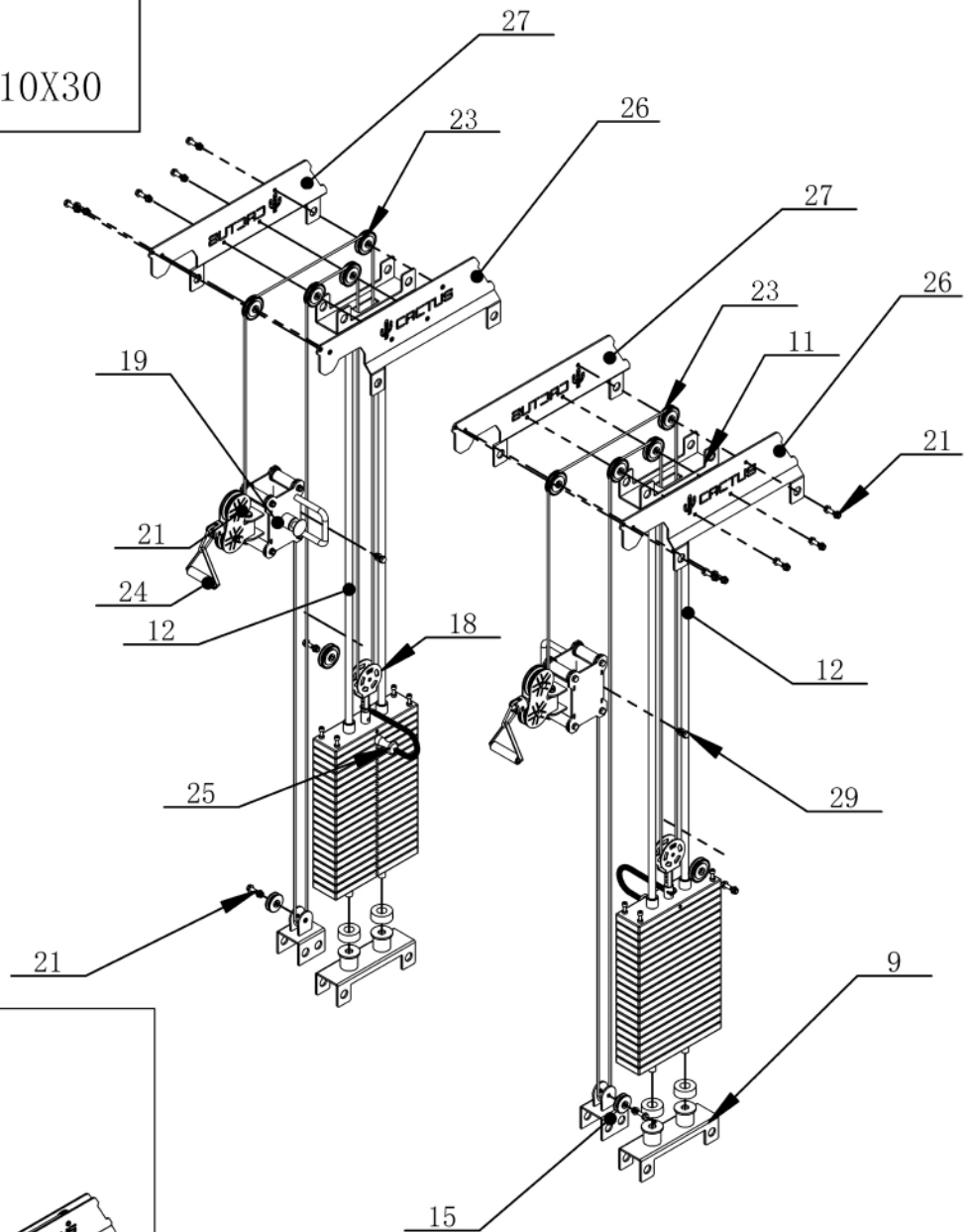


Please read this step of assembly drawings, assemble the right uprights(1)and the left uprights(2),crossmembers (4)and(28),rear crossbeam with logo plate(3), multi pull up bar(34), extension legs(5) with the M24X110 Bolts & Nuts(17).

## ASSEMBLY STEP 2

②① X18 M10X45

②⑨ X2 M10X30



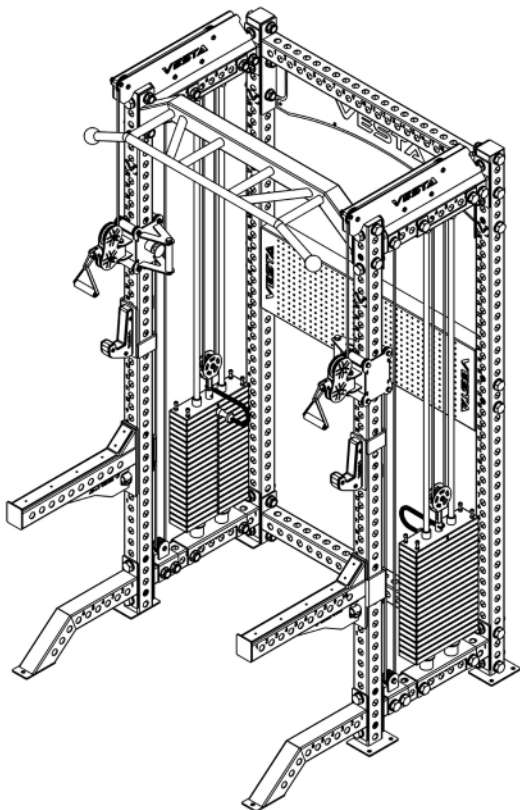
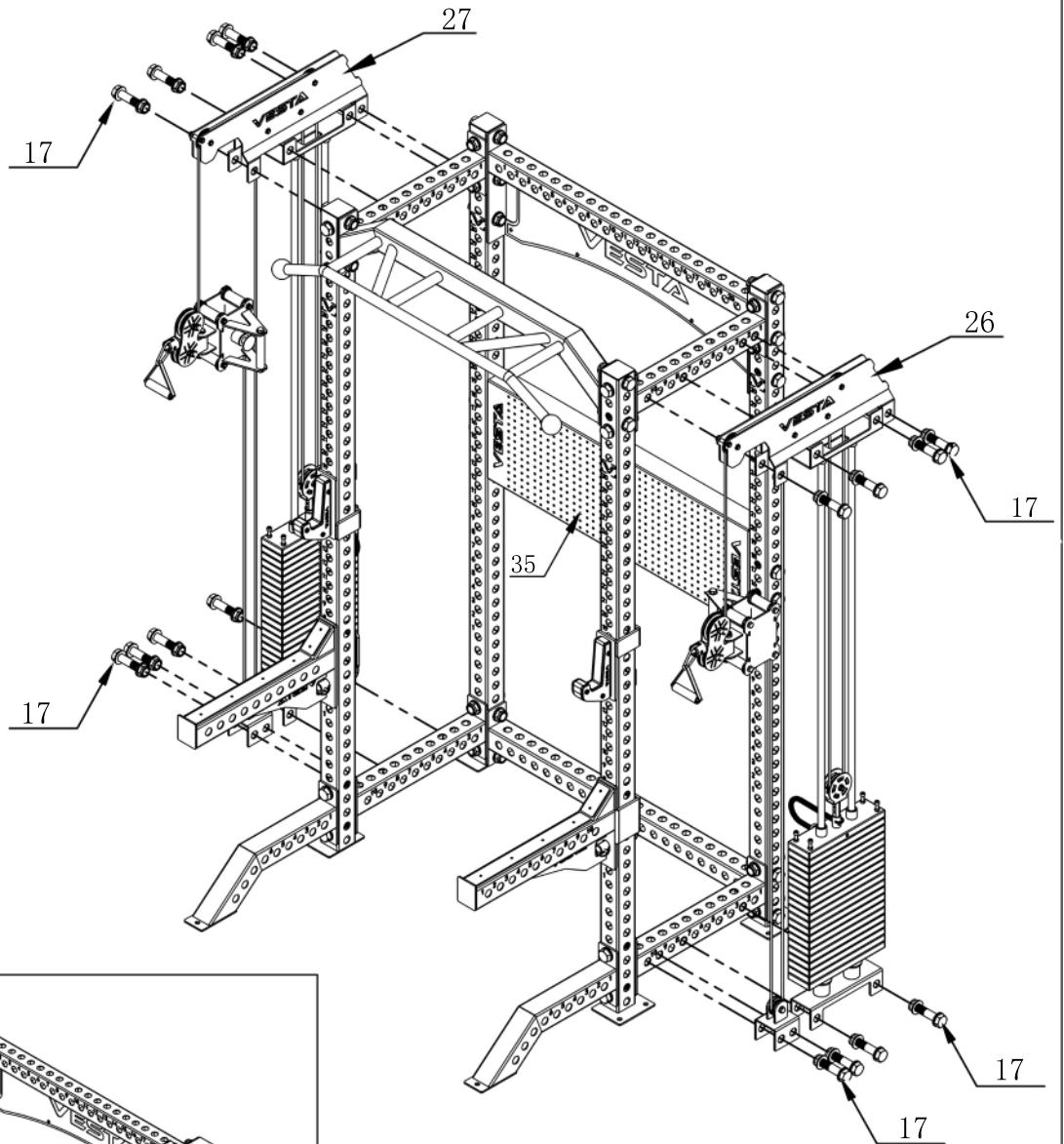
Please read this step of assembly drawings, assemble the upper cable-pulley system right slinger(26) and left slinger(27), aluminum pulley(23) with the M10X45 Bolts & Nuts(21).

# ASSEMBLY STEP 3

17

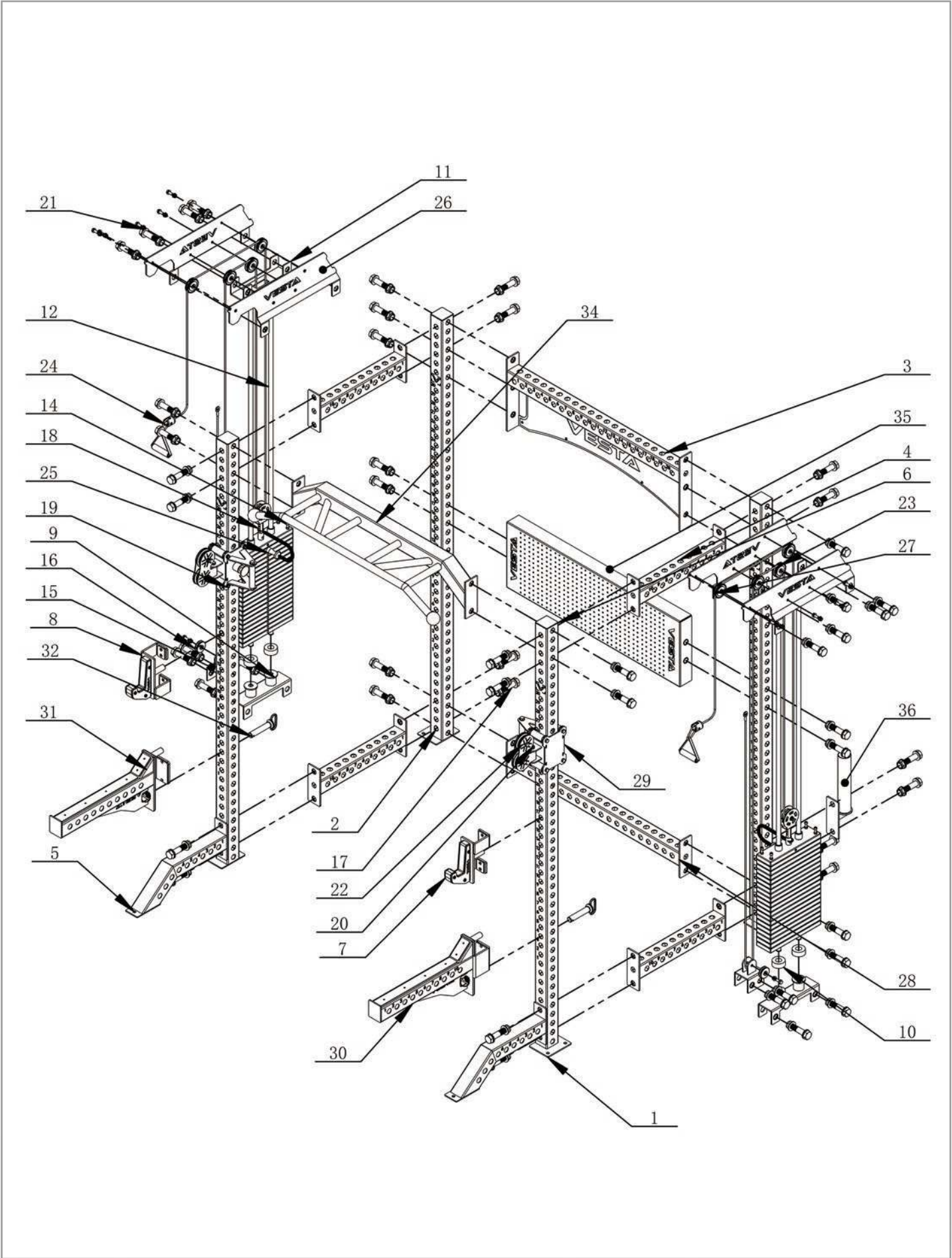


X16 M24X110

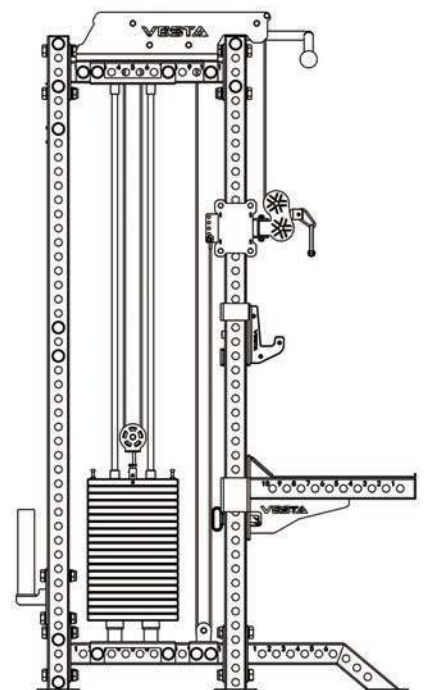
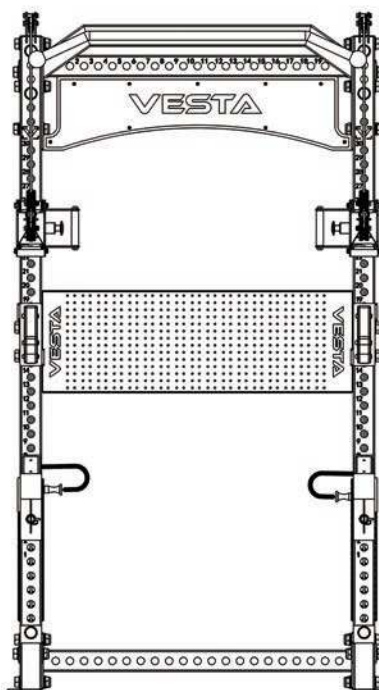
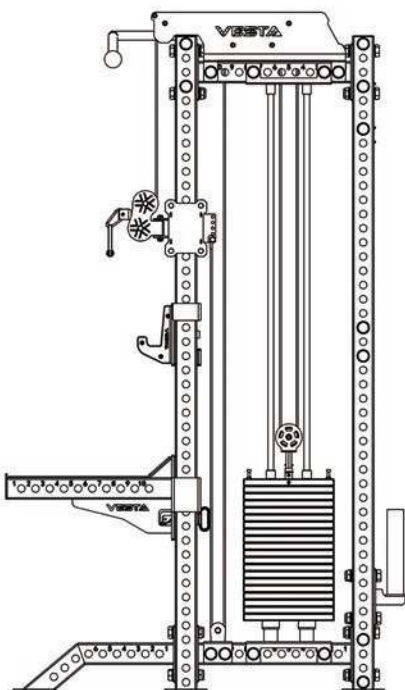
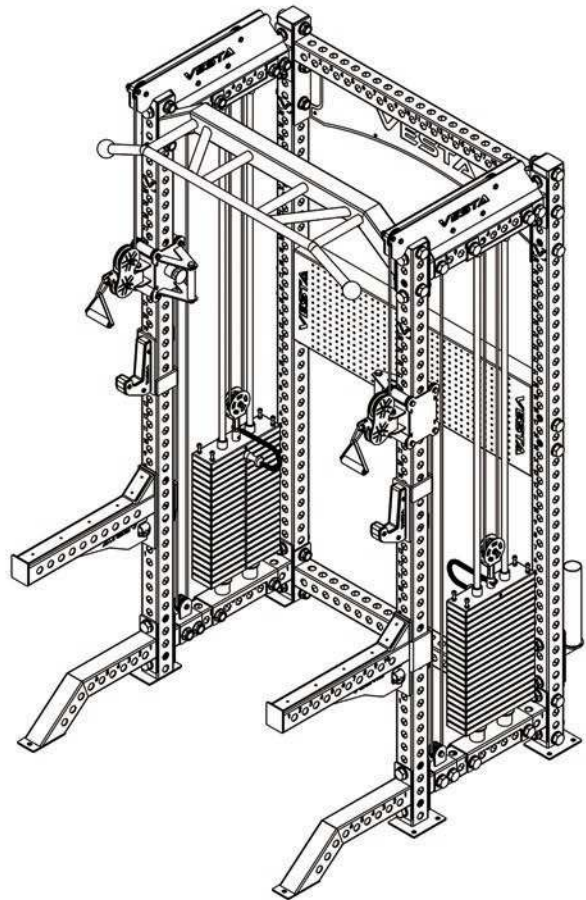
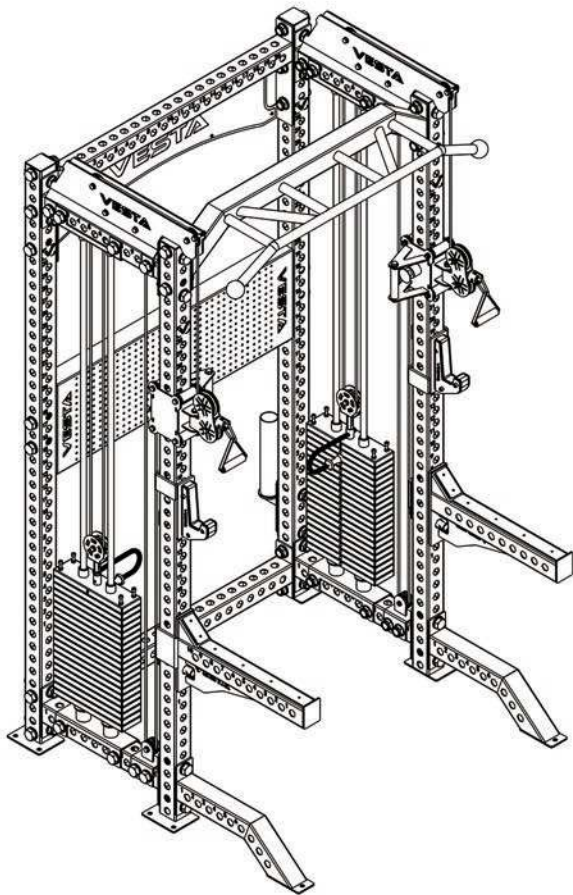


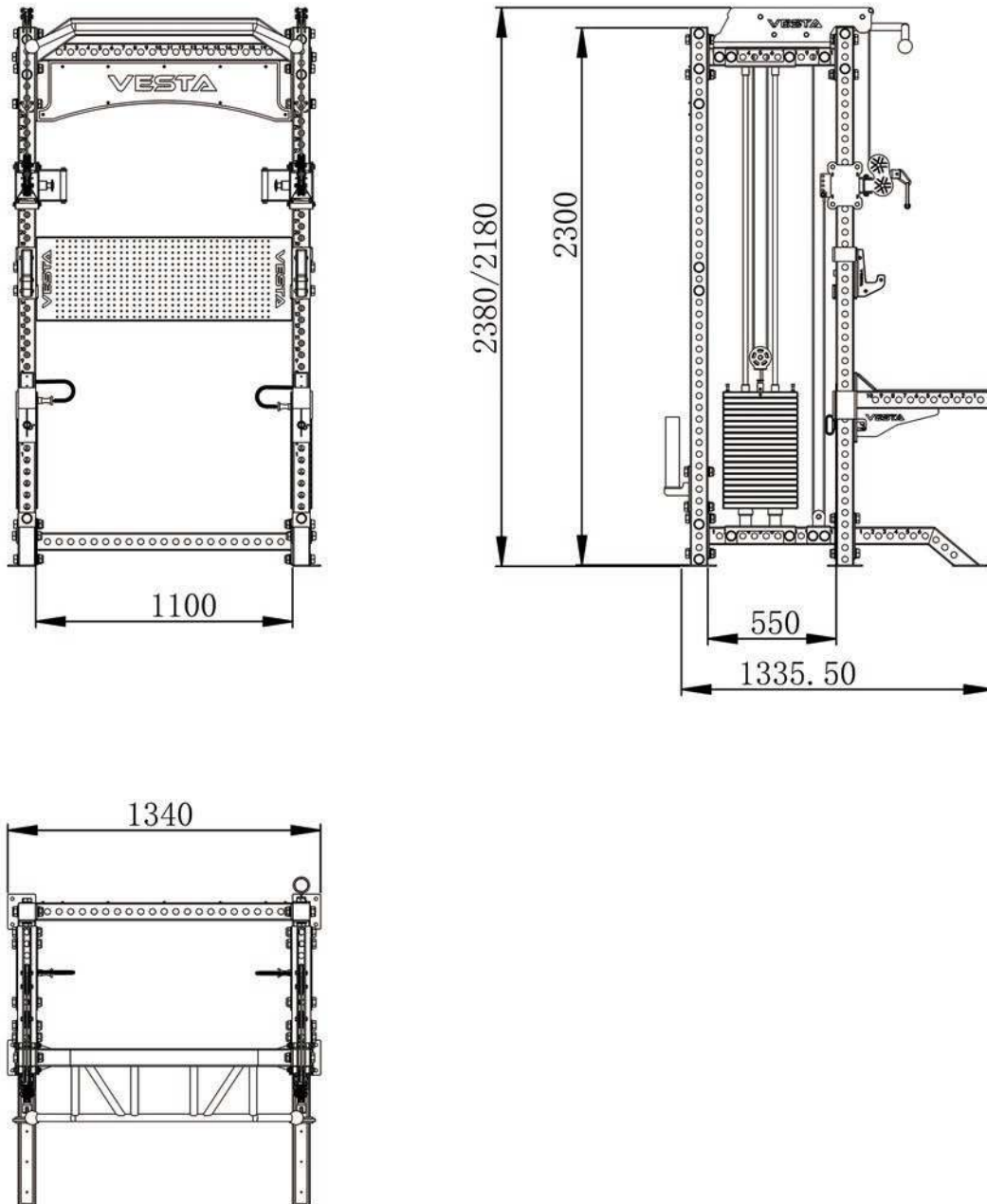
Please read this step of assembly drawings, install the cable-pulley system slingers (26) and (27), the cable attachments peg board (35) to the half power rack with the M24X110 Bolts & Nuts (17), then adjust and test each parts to complete the installation.

# EXPLODED DIAGRAM



# ASSEMBLY DIAGRAM





There is reasonable tolerance range in the practical production

## WARRANTY

### LIFETIME WARRANTY ON FRAME AND 2 YEAR WARRANTY ON MOVING PARTS

This warranty applies to first owners and does not cover second-hand equipment or re-sold equipment. This warranty covers only failures due to defects in structural, cables and pulleys and workmanship that occur during regular exercise use. It will not cover damage that occurs in transport/delivery or failure due to misuse, abuse, neglect, misapplication, alteration or improper assembly of the product.